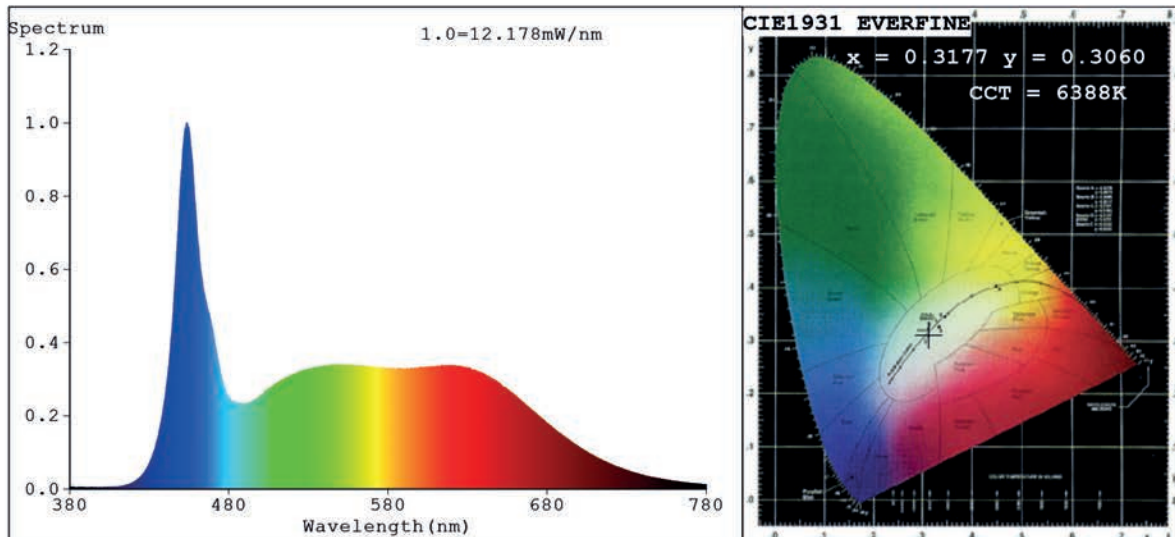


Spectrum Test Report



Color Parameters:

Chromaticity Coordinate: $x=0.3177$ $y=0.3060$ $u'=0.2106$ $v'=0.4562$
 $CCT=6388K$ ($Duv=-0.0118$) Dominant WL: $\lambda_d = 452.0nm$ Purity=8.7%
 Ratio: R=17.5% G=75.7% B=6.8%; Peak WL: $\lambda_p = 453.6nm$ FWHM=21.2nm
 Render Index: $R_a=92.8$ CRI=89.9 TM30: $R_f=87$ $R_g=105$
 R1 =90 R2 =93 R3 =94 R4 =95 R5 =91 R6 =89 R7 =97
 R8 =93 R9 =76 R10=92 R11=94 R12=69 R13=91 R14=96 R15=87

Photo Parameters:

Flux = 289.7 lm Eff. : 30.38 lm/W $\Phi_e = 1.117 W$

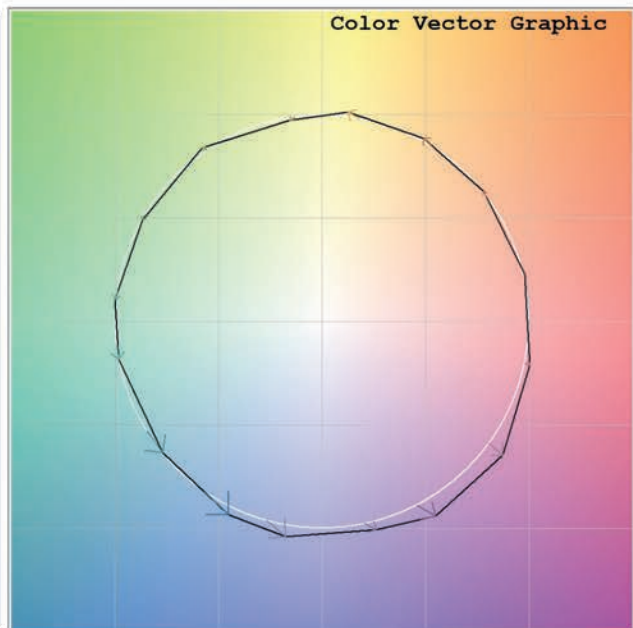
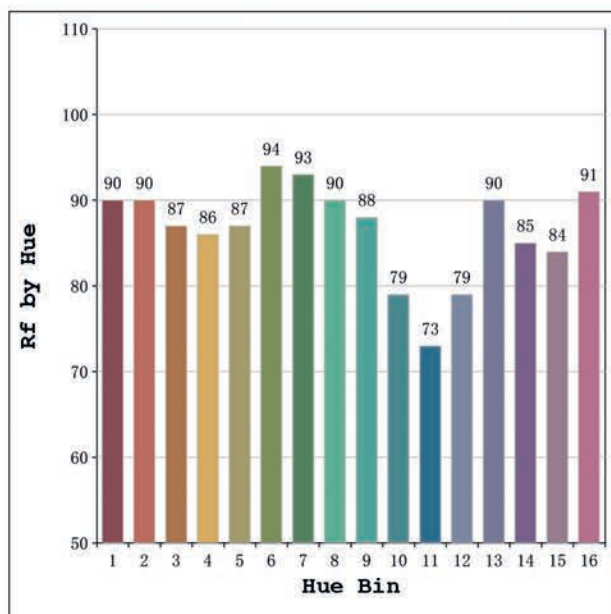
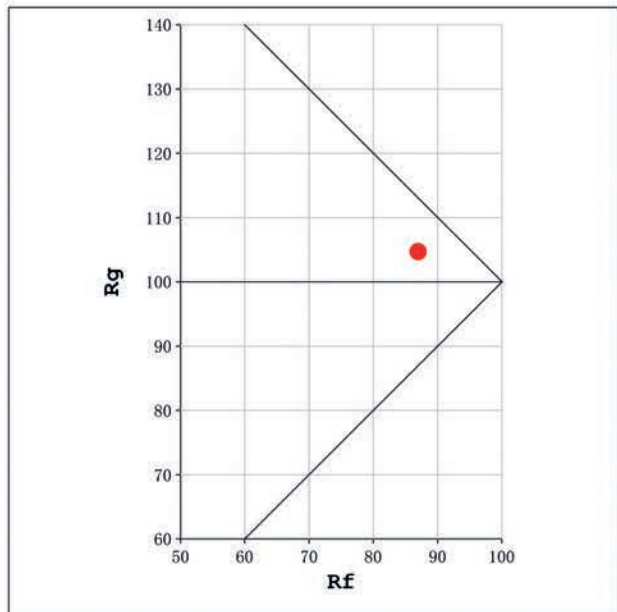
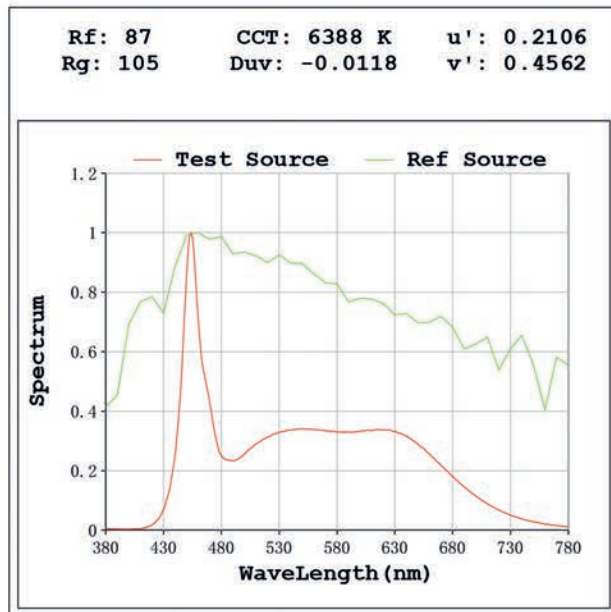
Electrical parameters:

$V = 23.998 V$ $I = 0.3974 A$ $P = 9.537 W$ PF = 1.000

Status: Integral T = 2000 ms $I_p = 33134 (51\%)$

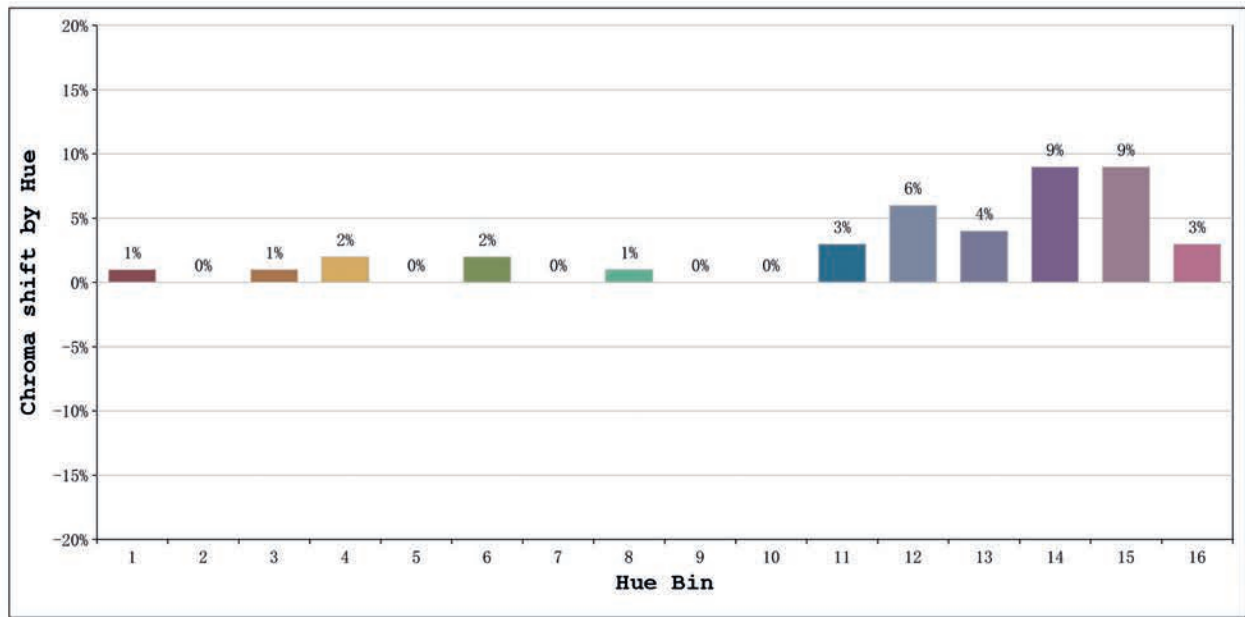
Model: Ecoled Neón Dakar 6000K
 Tester: Sergio Carneros
 Temperature: 27Deg
 Manufacturer: Luz Negra S.L

Number: 10.252
 Date: 2024-11-18 10:47:18
 Humidity: 40%
 Remarks: 100cm de néon



Model:Ecoled Neón Dakar 6000K
 Tester:Sergio Carneros
 Temperature:27Deg
 Manufacturer:Luz Negra S.L

Number: 10.252
 Date:2024-11-18 10:47:18
 Humidity:40%
 Remarks:100cm de neón



			Graphic shift(%)	
Hue Bin	Hue Angle	Rf	Chroma	Hue
1	0.0° - 22.5°	90	1	2
2	22.5° - 45.0°	90	0	3
3	45.0° - 67.5°	87	1	5
4	67.5° - 90.0°	86	2	6
5	90.0° - 112.5°	87	0	3
6	112.5° - 135.0°	94	2	2
7	135.0° - 157.5°	93	0	2
8	157.5° - 180.0°	90	1	4
9	180.0° - 202.5°	88	0	7
10	202.5° - 225.0°	79	0	13
11	225.0° - 247.5°	73	3	16
12	247.5° - 270.0°	79	6	10
13	270.0° - 292.5°	90	4	5
14	292.5° - 315.0°	85	9	5
15	315.0° - 337.5°	84	9	0
16	337.5° - 360.0°	91	3	0

Model:Ecoled Neón Dakar 6000K
 Tester:Sergio Carneros
 Temperature:27Deg
 Manufacturer:Luz Negra S.L

Number: 10.252
 Date:2024-11-18 10:47:18
 Humidity:40%
 Remarks:100cm de néon